

**SCHEDULE OF FINISHES**

ROOF COVER:	COLORBOND BRIMDECK (WINDSPRAY)
GUTTER AND RWPS:	COLORBOND (WINDSPRAY)
TRUSS FRAME:	COLORBOND (WINDSPRAY)
WALLS (INTERNAL ABUTMENT):	BRICKWORK (FACADE) FACE BRICKWORK WITH CREAM MORTAR
WALLS (CONCRETE TILT PANELS):	GRAFFIATO TEXTURE PAINT FINISH DEEP VALETING COLOUR
WALLS (FEATURE TILT PANELS):	PAINTED FINISH
PAVING	BSC BLOCK PAVE, CREAM WITH CHARCOAL EDGING

**AREAS**

BUILDING A:	=482.39M <sup>2</sup>
BUILDING B:	=618.56M <sup>2</sup>
TOTAL:	=1100.95M <sup>2</sup>
LANDSCAPING: (ON SITE ONLY)	=418.90M <sup>2</sup>
SITE:	=4020.00M <sup>2</sup>

**CAR PARKING**

16 CAR BAYS INCLUDING 1X DISABLED BAY  
9 LOADING BAYS

**LANDSCAPE LEGEND**

- SHRUBS  
1 SCARLET UNZEA (Kurzea Baxteri)  
2 SNAKEBUSH (Hemliandra Pungens)



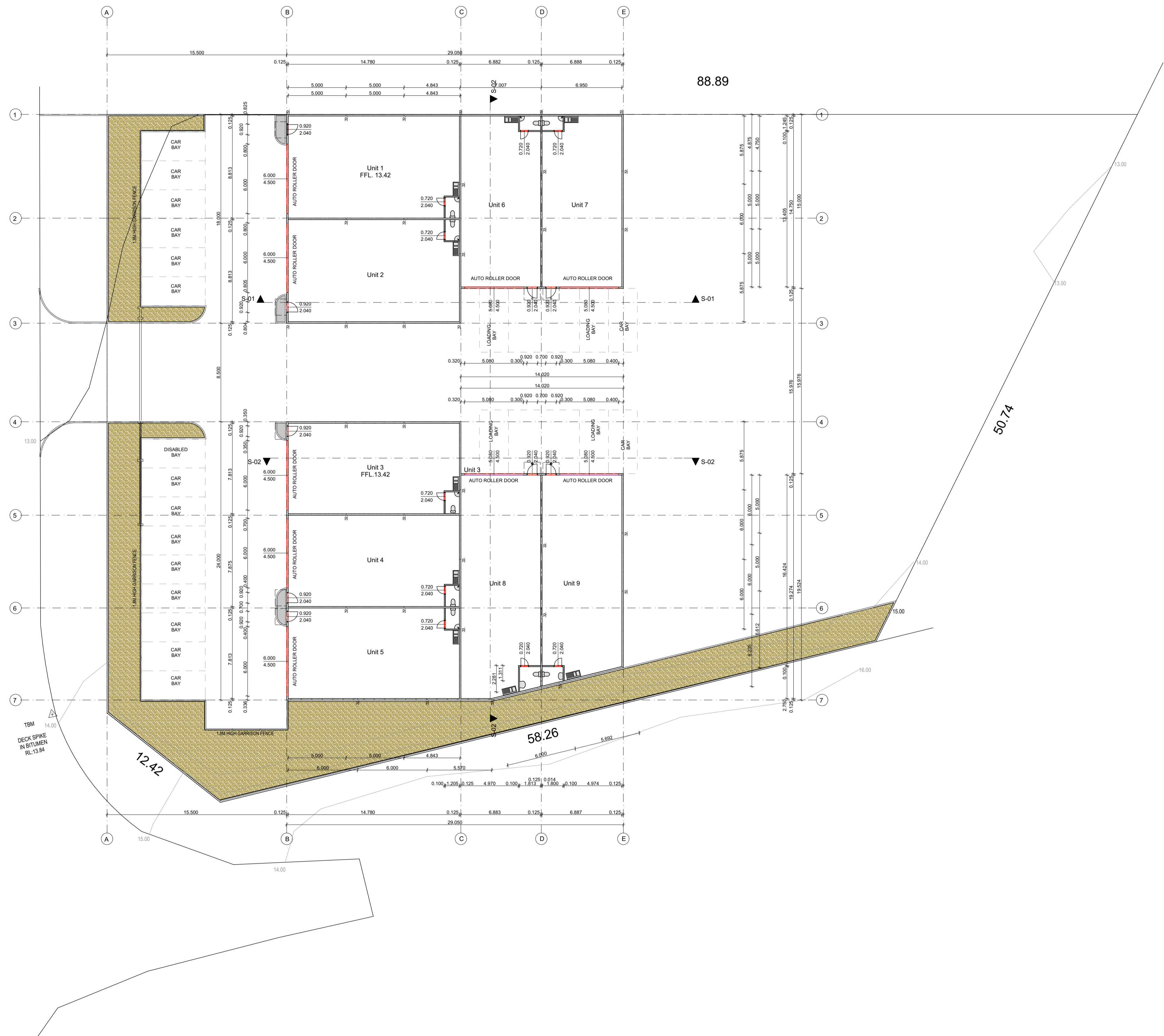
**NOTES:**

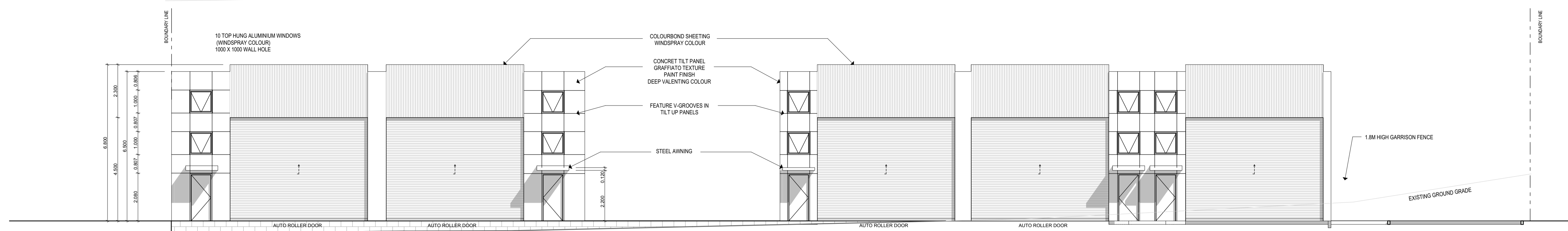
- SHRUBS TREES & GROUND COVERS TO AUTO RETICULATED WITH DRIPPERS TO EACH PLANT.
- ALL GARDEN BEDS TO HAVE MIN 100 mm DEEP JARRAH BARKCHIP MULCH
- ALL RETICULATION TO RUN OFF MAINS SUPPLY & COMPLY TO RELEVANT WATER AUTHORITY REQUIREMENTS & AUSTRALIAN STANDARDS, ALSO FITTED WITH APPROVED ANTI - BACK FLOW VALVES AS REQUIRED

**KEY:**

- 1.8M HIGH GARRISON FENCE
- WIRE MESH FENCE
- EXIST. CONTOURS

Thorborough Road

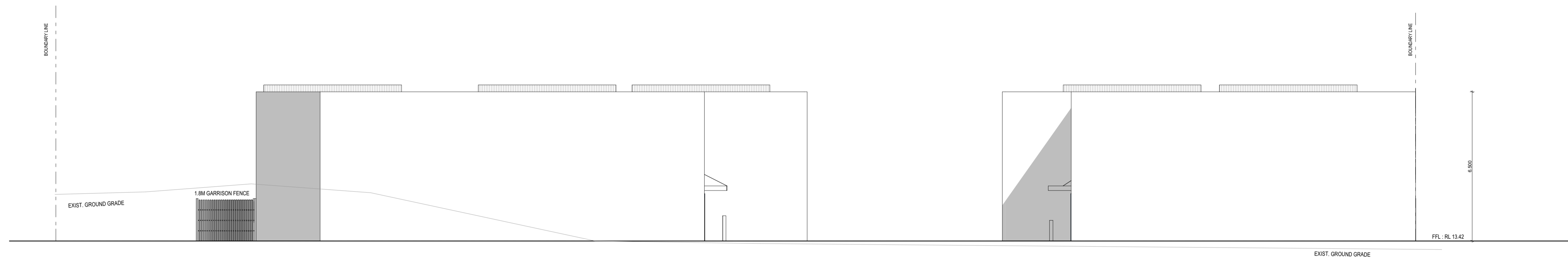




E-01

West Elevation (1)

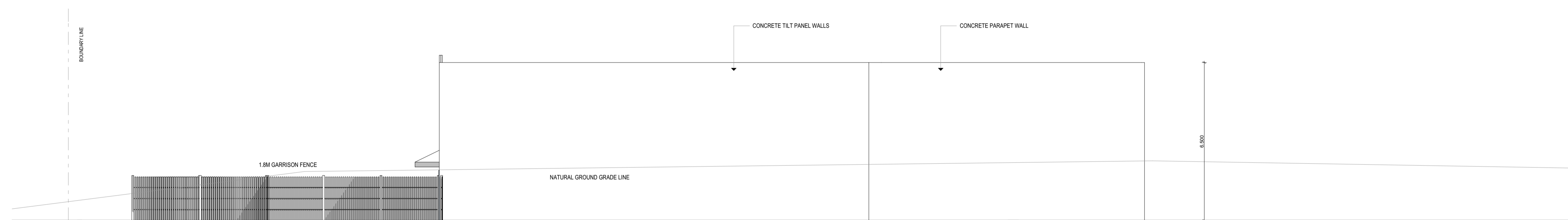
1:100



E-02

East Elevation (1)

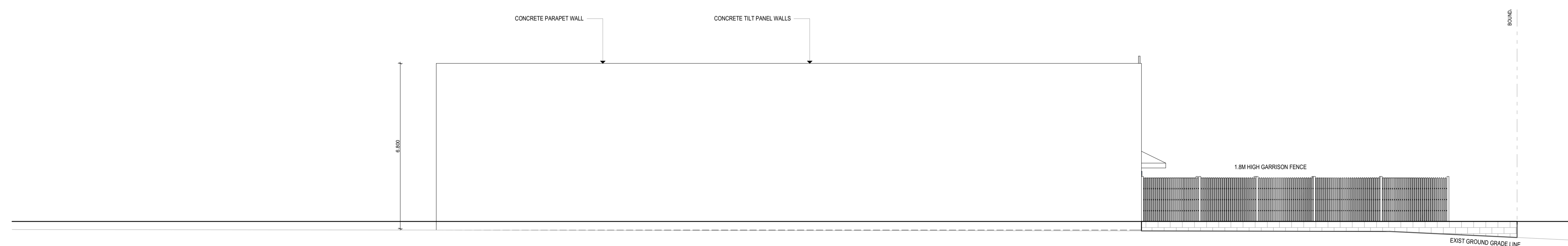
1:100



E-03

South Elevation (1)

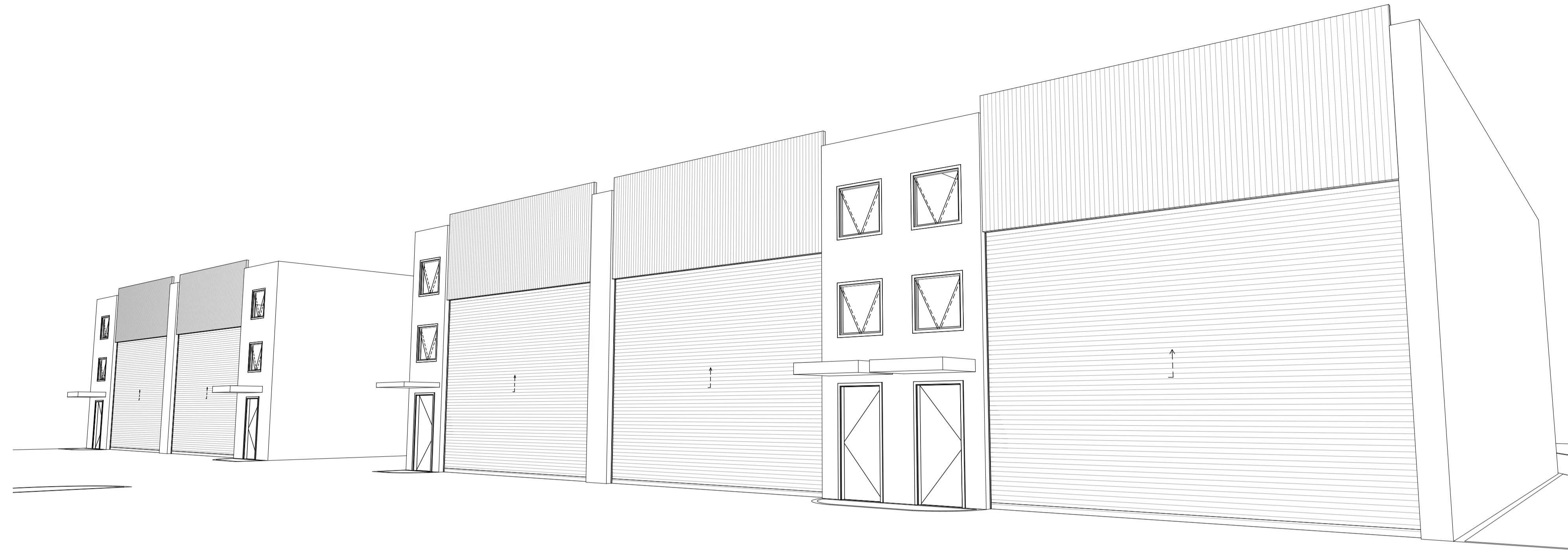
1:100



E-04

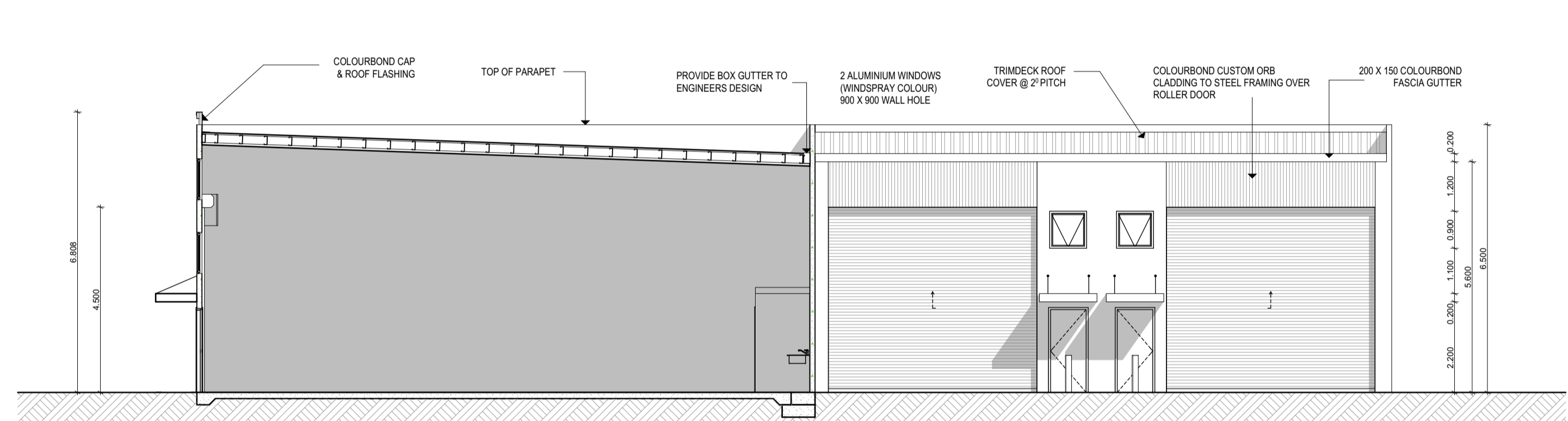
North Elevation (1)

1:100



South West Perspective

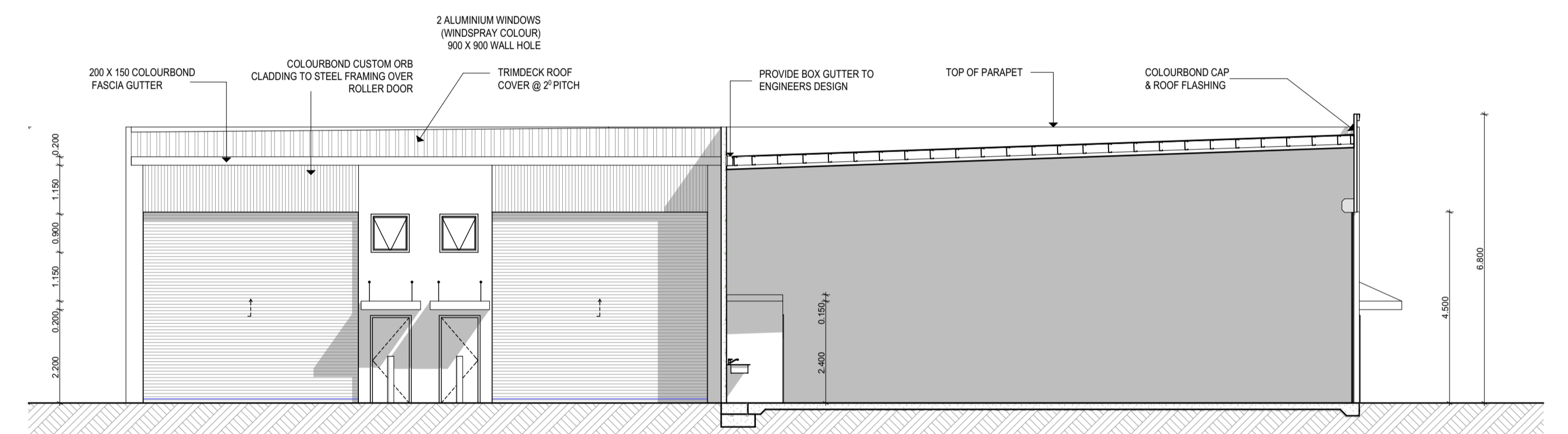
1:100



S-01

South Section Internal (1)

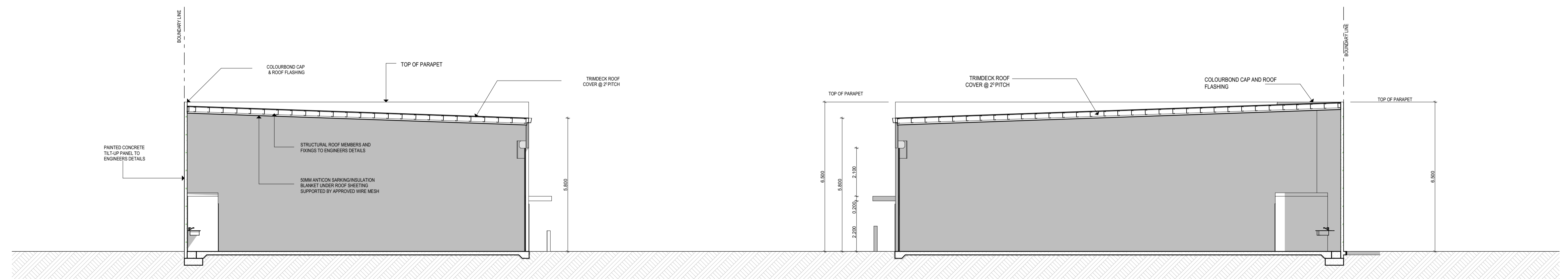
1:100



S-02

North Section Internal

1:100



S-03

West Section Internal (1)

1:100